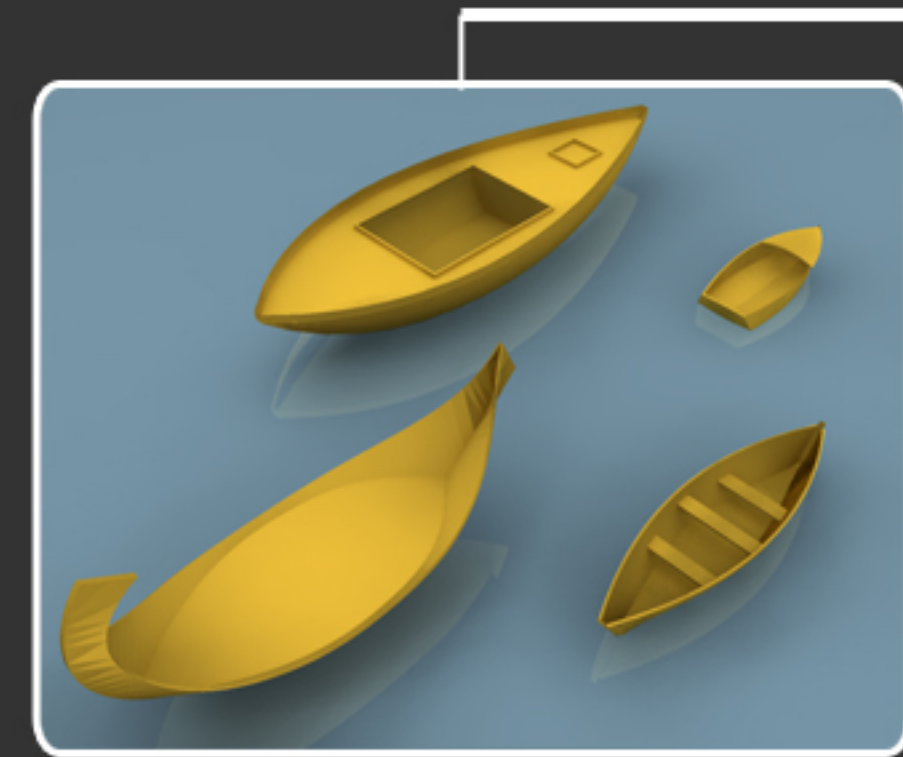
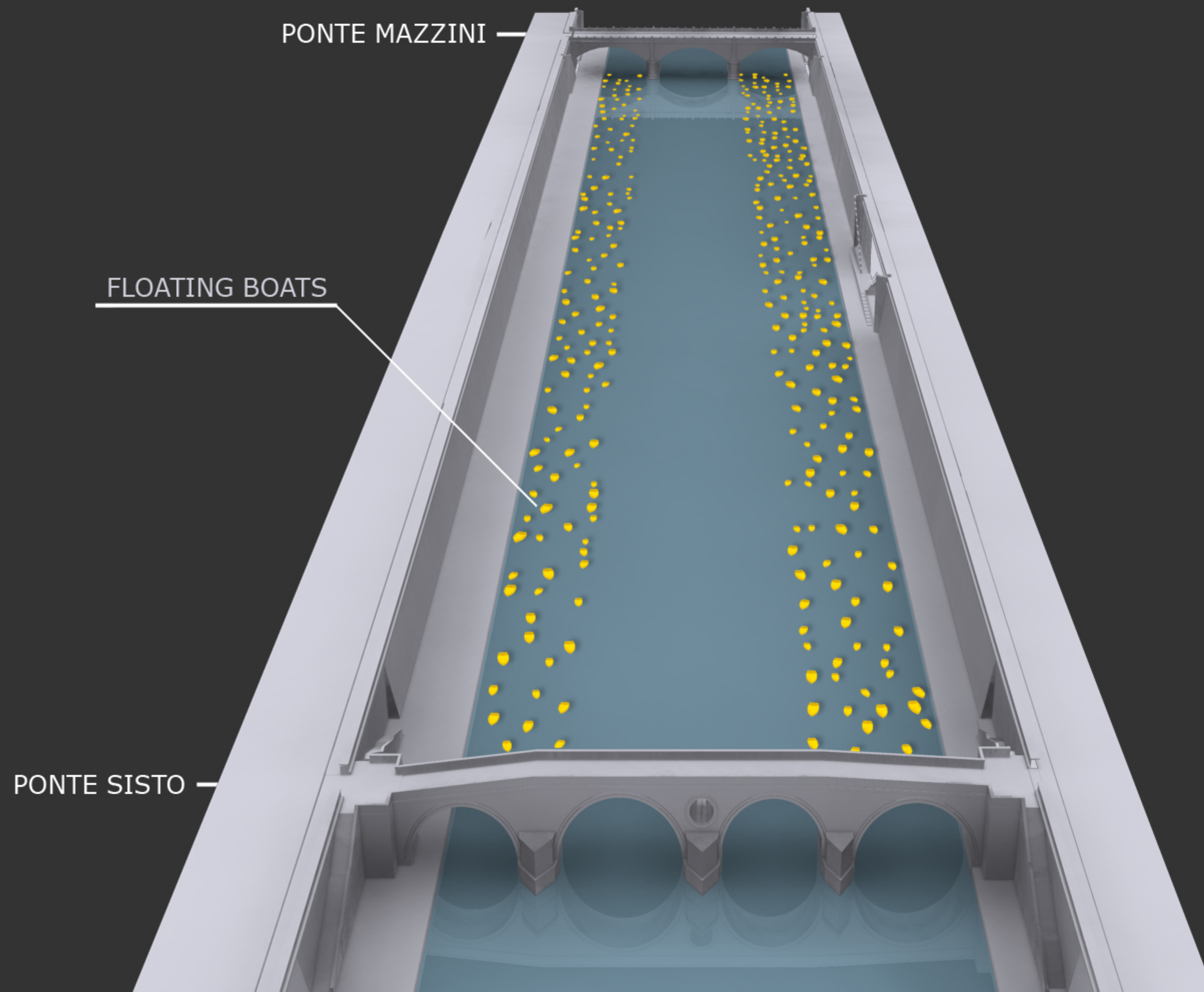


TEVERETERNO

Twelve proposals for the Tiber by Kristin Jones



BOAT HULLS



FLOTILLA

Materials: Foam, Aluminum, Resin

Dimensions: Boats ranging in size from 15.75" – 50" (40cm – 125cm)

Dispersed throughout the site, 1800' L x 334' W (549m L x 102m W)

Hundreds of saffron hulls will fill the immense, rectangular basin of the Tiber River between Ponte Sisto and Ponte Mazzini. Recalling the variety of boats that once filled the Tiber during its historic use as Rome's major artery for commerce and travel, the buoyant forms will be accurate, scale models of the hulls that lined the river's banks.

Animated by the river's current, seemingly traveling upstream, the vessels will recall the delight of model sail boating, where scale shifts perspective and that which is miniature becomes more real. *Flotilla* will be a reminder of the Tiber's vital past and a playful invitation to the public, drawing visitors to the riverfront for pleasure and recreation.